

# KITTATINNY RIDGE SENTINEL LANDSCAPE

PENNSYLVANIA | Est. 2024



In the Lenape language, Kittatinny means “Big Mountain.” This describes well the geography of Kittatinny Ridge Sentinel Landscape. Located in eastern Pennsylvania’s Appalachian Mountains, the Kittatinny Ridge Sentinel Landscape encompasses forested ridges and fertile valleys provide clean water, sequester vast amounts of carbon, and serve as a crucial corridor for rare wildlife and songbird migration. It also plays a leading role in Pennsylvania’s working lands and outdoor recreational economies.

The Kittatinny Ridge Sentinel Landscape supports military readiness as the home of the Pennsylvania National Guard’s Fort Indiantown Gap (FTIG): the busiest National Guard training center, the Army’s second busiest heliport, and one of only three specialized Army NG aviation facilities.

Rapid population growth and development around the Kittatinny Ridge Sentinel Landscape’s main highways have decreased open space and increased light pollution, threatening FTIG’s nighttime training capabilities. These pressures impact military installations specializing in Air and Missile Defense; sensitive species, like the eastern regal fritillary butterfly and cerulean warbler; ecosystem services, including drinking water, farm products, and timber; recreational resources; and climate change resilience. Currently, only 20 percent of the Kittatinny Ridge Sentinel Landscape is protected, which has attracted a myriad of partners to collaborate on strategic actions aimed at protecting the natural resources of this landscape.



Agriculture is a key land use in the KRSL, especially in its valleys, where there are prime farmlands. (Photo by KRCL)

## Landscape Goals



Preserve training missions and enhance readiness in the Kittatinny Ridge military corridor.



Increase coordinated and holistic land conservation, natural resource protection, and stewardship initiatives.



Support working lands productivity and economic development.



Improve nature-based recreational resources and access to sustain small-town economies.

## LANDSCAPE DETAIL

Total Sentinel Landscape Area: **1.9 million acres**

Total Protected Acres:

**0**

From year established through fiscal year 2023

Total Enrolled Acres:

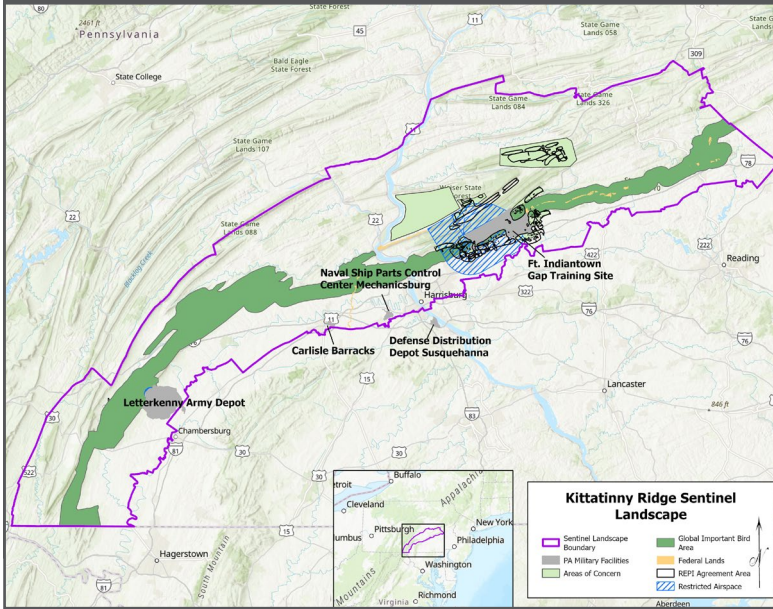
**0**

For fiscal year 2023

Active Base Area Acres:

**17,203**

## Kittatinny Ridge Sentinel Landscape Map



The Kittatinny Ridge is the gateway to Pennsylvania's Ridge and Valley Region.  
(Photo by KRCL)

## Key Partners

- ▶ Appalachian Trail Conservancy
- ▶ Audubon Mid-Atlantic
- ▶ Center for Land Use and Sustainability, Shippensburg University
- ▶ Hawk Mountain Sanctuary Association
- ▶ Kittatinny Ridge Conservation Landscape
- ▶ Letterkenny Army Depot
- ▶ Manada Conservancy
- ▶ Pennsylvania Department of Agriculture
- ▶ Pennsylvania Department of Community and Economic Development
- ▶ Pennsylvania Department of Conservation and Natural Resources
- ▶ Pennsylvania Department of Environmental Protection
- ▶ Pennsylvania Department of Military and Veterans Affairs
- ▶ Pennsylvania Department of Transportation
- ▶ Pennsylvania Fish and Boat Commission
- ▶ Pennsylvania Game Commission
- ▶ Pennsylvania Military Community Enhancement Commission
- ▶ Pennsylvania National Guard
- ▶ Pennsylvania Office of Outdoor Recreation
- ▶ The Lebanon Valley Conservancy
- ▶ The Nature Conservancy Pennsylvania/Delaware Chapter
- ▶ U.S. Department of Agriculture, Natural Resources Conservation Service – Pennsylvania
- ▶ U.S. Department of Defense, Chesapeake Bay Program
- ▶ U.S. Fish and Wildlife Service NE Region Science Applications
- ▶ U.S. Fish and Wildlife Service PA Field Office
- ▶ Ward Burton Wildlife Foundation



LANDSCAPE COORDINATOR CONTACT: Rose McCarthy | [rosccarth@pa.gov](mailto:rosccarth@pa.gov)