

HALF-WAY TO CLEAN WATER

The Mid-Point Assessment and
Phase III WIPs



Ann Swanson
Executive
Director

November 11,
2016

Chesapeake Bay TMDL



2010: TMDL established

Phase I WIPs

Phase II WIPs

2017: **MID-POINT ASSESSMENT**

60% of needed actions

2018: Phase III WIPs

2025: **ACHIEVE CLEAN WATER**

100% of needed actions

Witnessing
Success!

SAV



Witnessing
Success!

CLARITY



Witnessing
Success!

HEADWATERS



Midpoint
Assessment
Priority

New Tools for the Mid-Point Assessment & WIP Development

Improve accuracy, transparency and
confidence in the modeling tools

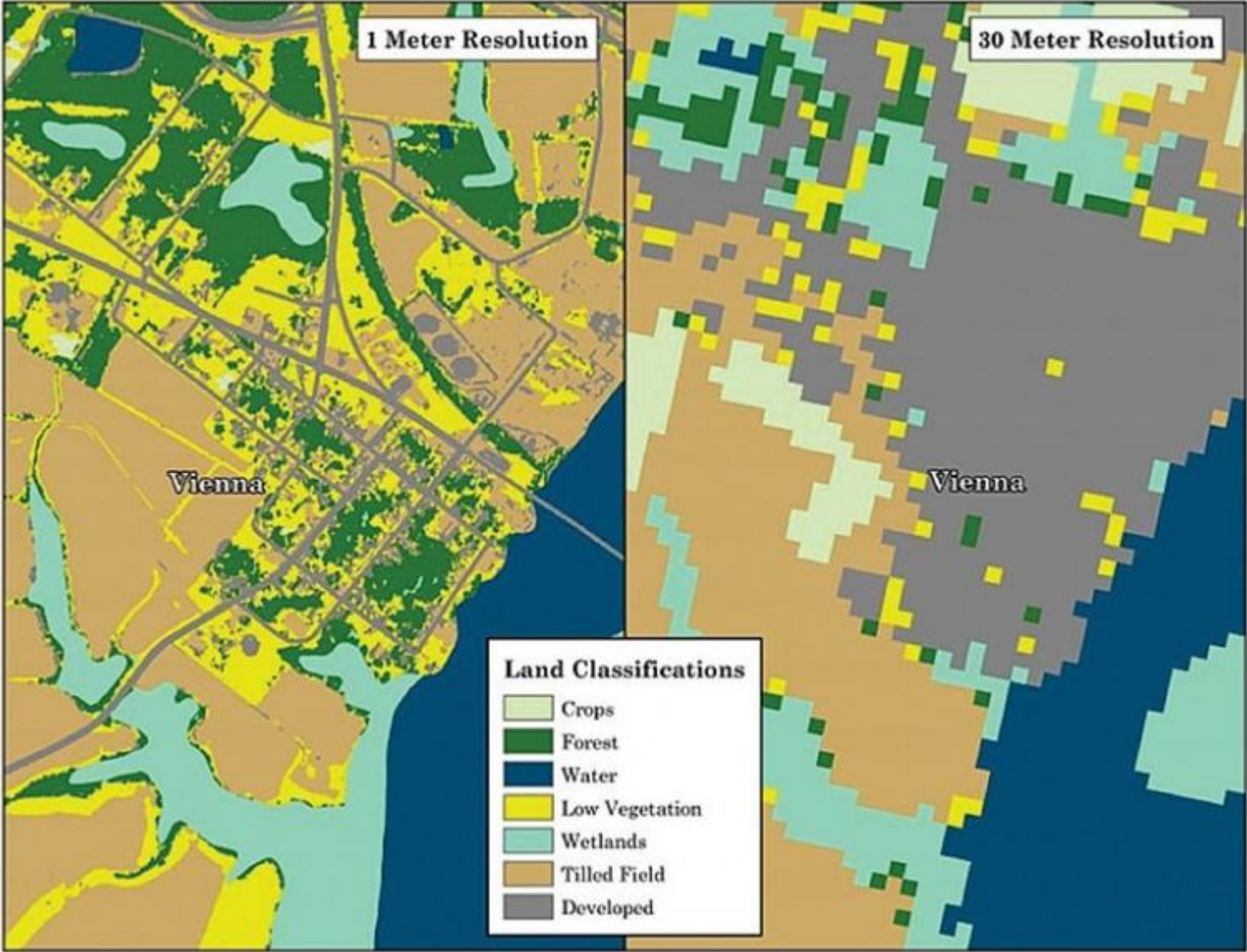
Midpoint Assessment Priority

1.

REFINING THE DATA

- Collection of Local Land Use and Land Cover Data
- Incorporating the latest science for Conowingo & Climate Change

Land Use Land Cover



Midpoint
Assessment
Priority

2.

CREDIT IN THE MODEL

Convene Expert Panels to
Credit BMPs

BMP Expert Panels

Animal Waste Storage Systems	Phase 6 Nutrient Management	Advanced Onsite Systems (Attenuation) Part II
Phase 6 Conservation Tillage	Wetlands	Cropland Irrigation Management
Manure Injection/ Manure Incorporation	Urban Tree Canopy	Manure Treatment Technologies
Oyster Restoration/ Aquaculture	Floating Wetlands	Impervious Disconnection
Boat Pump-Out	Advanced Onsite Systems, Part III	Agricultural Ditch
Phase 6 Cover Crops		Agriculture Stormwater Structures

Midpoint
Assessment
Priority

3.

ENGAGE LOCAL PARTNERS

Developing Local Area Targets for
Phase III WIPs

Local
Area
Targets

Local **Targets** ...
Local **Planning** Targets ...
Local Planning **Goals**

Local = _____?*

*County, Facility, District, PDC, Commission,
Segment-Shed, Sub-Watershed, Watershed,
Hot Spots, All or None of Above.

*"Who is the
Lead Systems Integrator?"*

Chairman Scott Lingamfelter, Jan 2016 CBC meeting